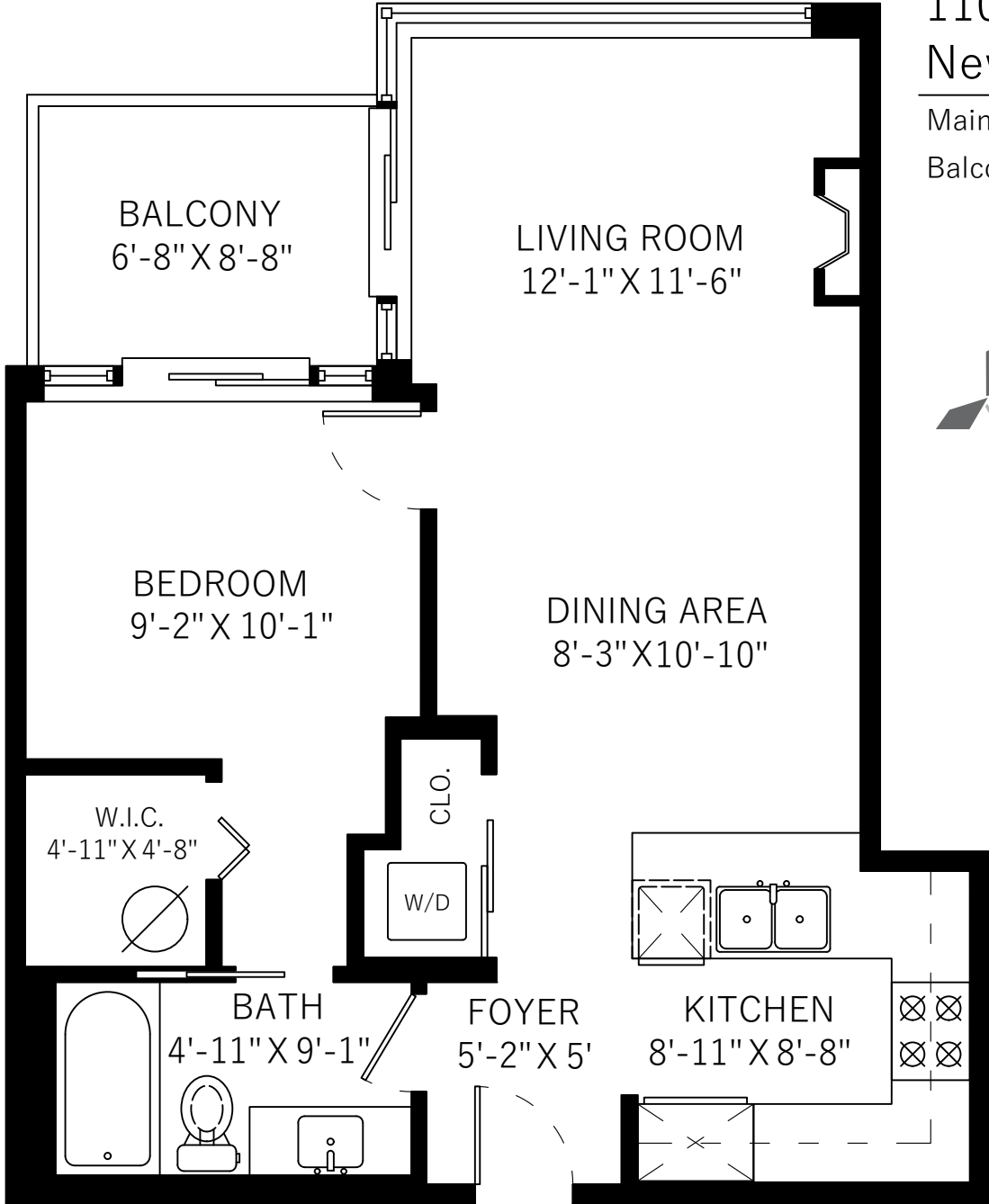


1103-610 Victoria St
New Westminster, BC

Main Floor 623 SQ.FT.

Balcony 62 SQ.FT.



Main Floor: 623 Sq.Ft.
Ceiling Height: 8'



Floor plan not suitable for architectural/construction purposes. ANSI Z765 standard used to calculate square footage. Buyer to verify.

