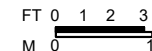
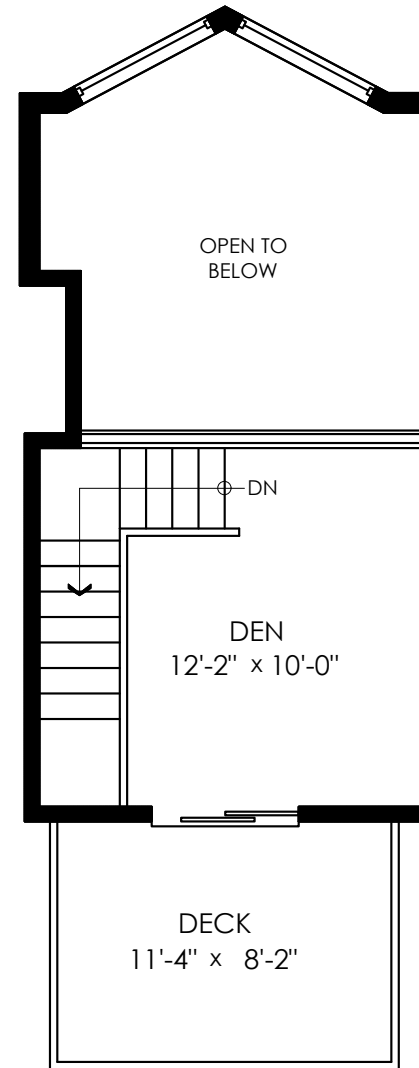
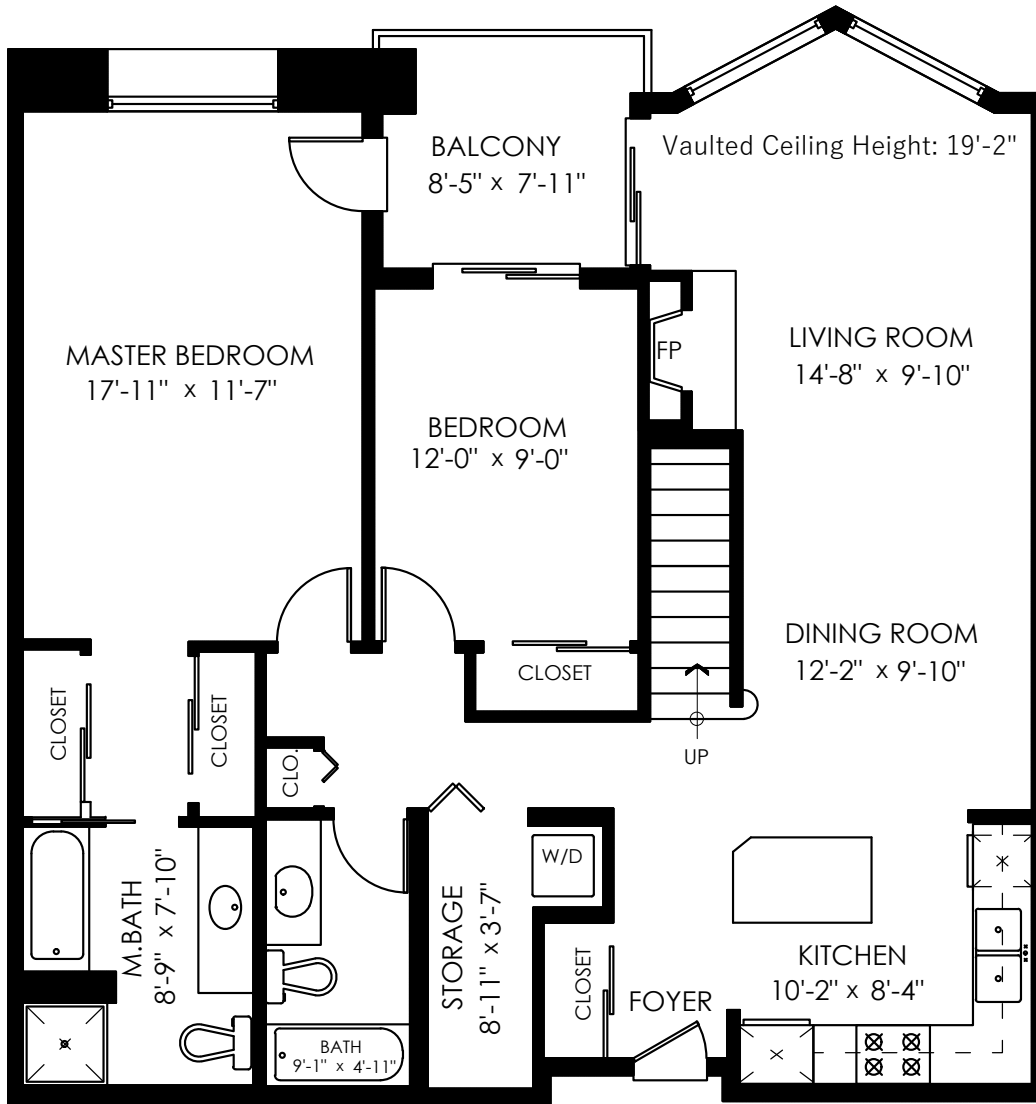


410-60 Richmond St.
New Westminster, BC

Main Floor	1195 SQ.FT.
Upper Floor	186 SQ.FT.
Total	1381 SQ.FT.
Deck	100 SQ.FT.
Balcony	68 SQ.FT.
Total Extras	168 SQ.FT.
Open To Below	171 SQ.FT.



Main Floor: 1195 Sq.Ft.
Ceiling Height: 8'-0"

Upper Floor: 186 Sq.Ft.
Vaulted Ceiling Height: 10'-4"