

STRATA PLAN OF LOT 72
 OF SECTIONS 19 AND 20, BLOCK 5
 NORTH, RANGE 1 WEST,
 PLAN 51713,
 NEW WESTMINSTER DISTRICT
 MUNICIPALITY OF SURREY
 HOLLY PARK LANE

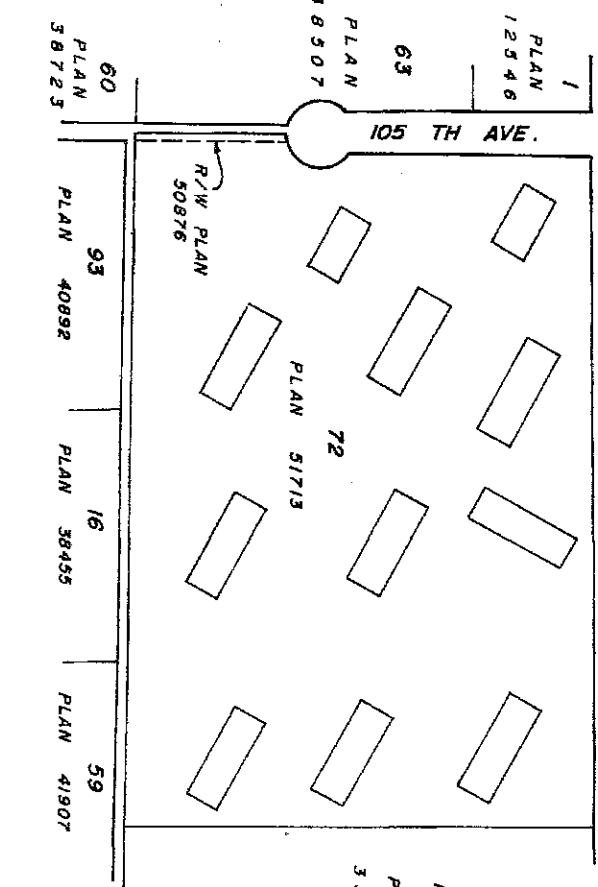
KEY PLAN
 SCALE: 1 INCH = 200 FEET

CIVIC ADDRESSES ARE AS SHOWN ON SHEETS 11 TO 21 INCLUSIVE.

FOR SURREY PLAN
 FOR LOT 2 PLAN 12546
 EXHIBIT BERT NEWELL
 2182 L.M.P. (1975)

THE ADDRESS FOR SERVICE OF DOCUMENTS ON THE STRATA CORPORATION IS:

THE OWNERS:
 STRATA PLAN NW. 1018
 C/O
 ASACUS CHINESE LTD.
 40-80X-1682,
 14-11 FLOOR, 14-11 TOWER,
 201-11 GEORGIA STREET,
 VANCOUVER, B.C.,
 V7Y-1G8



105
 PLAN
 3 5 9 5 4
 CH DENOTES CHIMNEY
 M DENOTES SQUARE FEET

I, GORDON HEROLD MURRAY OF VANCOUVER, BRITISH COLUMBIA LAND SURVEYOR, HEREBY CERTIFY THAT THE BUILDINGS ERECTED ON THE PARCEL DESCRIBED ABOVE ARE WHOLLY WITHIN THE EXTERNAL BOUNDARIES OF THAT PARCEL.
 DATED AT SURREY, B.C.
 THIS 29th DAY OF September, 1977.

G. H. Murray
 B. C. L. S.

STRATA PLAN N.W. 1018
 DEPOSITED AND REGISTERED IN
 THE LAND REGISTRY OFFICE AT
 NEW WESTMINSTER, BRITISH COLUMBIA,
 THIS 28 DAY OF September, 1978.
[Signature]
 REGISTRAR

MURRAY & ASSOCIATES
 9238 SCOTT ROAD

SURREY, B.C.,
 V3V 4B7

NOTES:
 (SD) DENOTES SUNDECK
 (B) DENOTES BALCONY
 (CP) DENOTES COMMON PROPERTY

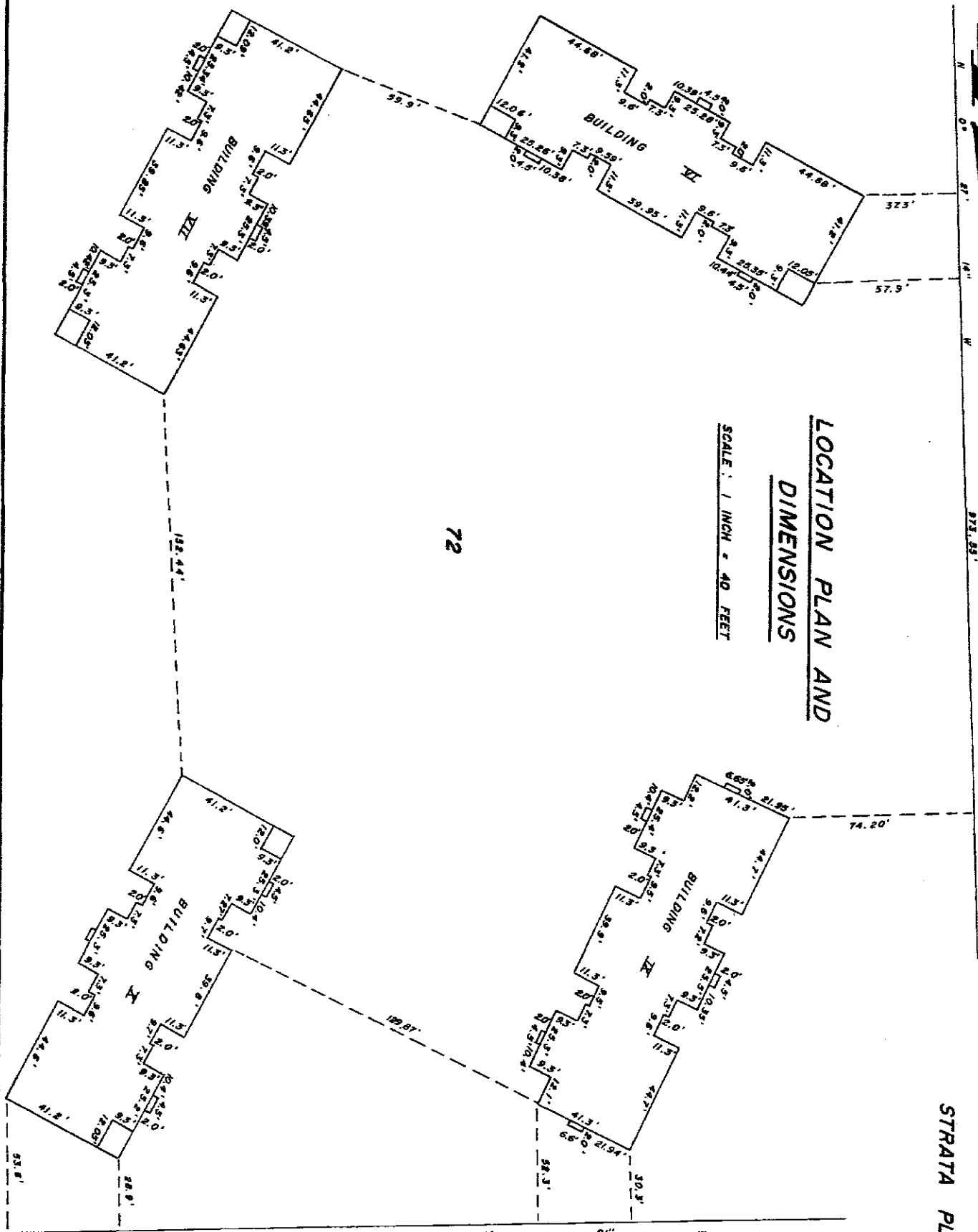
ALL BALCONIES AND SUNDECKS ARE COMMON PROPERTY.

STRATA PLAN N.W. 2018

LOCATION PLAN AND DIMENSIONS

SCALE: 1 INCH = 40 FEET

72



105

PLAN

35964

SEPTEMBER 29, 1977

FILE 6015

STRATA PLAN N.W. 1018

STRATA LOT NUMBER	SHEET NUMBER	FORM I SCHEDULE OF UNIT ENTITLEMENT	FORM II SCHEDULE OF INTEREST UPON DESTRUCTION	FORM III SCHEDULE OF VOTING RIGHTS
1	11	846	45000	
2	11	850	45000	
3	11	862	45000	
4	11	846	45000	
5	11	1045	45000	
6	11	1055	45000	
7	11	1065	45000	
8	11	1039	45000	
9	11	1039	45000	
10	11	1065	45000	
11	11	1055	45000	
12	11	1045	45000	
13	12	848	45000	
14	12	848	45000	
15	12	847	45000	
16	12	848	45000	
17	12	1044	45000	
18	12	1054	45000	
19	12	1054	45000	
20	12	1044	45000	
21	12	1040	45000	
22	12	1050	45000	
23	12	1050	45000	
24	12	1040	45000	
25	13	850	45000	
26	13	857	45000	
27	13	857	45000	
28	13	856	45000	
29	13	854	45000	
30	13	851	45000	
31	13	1045	45000	
32	13	1065	45000	
33	13	1065	45000	
34	13	1065	45000	
35	13	1059	45000	
36	13	1045	45000	
37	13	1047	45000	
38	13	1063	45000	
39	13	1067	45000	
40	13	1067	45000	

41	13	1067	45000	
42	13	1047	45000	
43	14	845	45000	
44	14	853	45000	
45	14	855	45000	
46	14	852	45000	
47	14	853	45000	
48	14	845	45000	
49	14	1038	45000	
50	14	1066	45000	
51	14	1068	45000	
52	14	1064	45000	
53	14	1058	45000	
54	14	1038	45000	
55	14	1038	45000	
56	14	1058	45000	
57	14	1064	45000	
58	14	1058	45000	
59	14	1058	45000	
60	14	1038	45000	
61	15	857	45000	
62	15	846	45000	
63	15	854	45000	
64	15	851	45000	
65	15	844	45000	
66	15	857	45000	
67	15	1054	45000	
68	15	1054	45000	
69	15	1058	45000	
70	15	1058	45000	
71	15	1048	45000	
72	15	1054	45000	
73	15	1048	45000	
74	15	1044	45000	
75	15	1054	45000	
76	15	1054	45000	
77	15	1048	45000	
78	15	1048	45000	
79	16	844	45000	
80	16	854	45000	
81	16	854	45000	
82	16	854	45000	
83	16	854	45000	
84	16	845	45000	
85	16	1058	45000	

86	16	1058	45000	
87	16	1058	45000	
88	16	1058	45000	
89	16	1058	45000	
90	16	1058	45000	
91	16	1044	45000	
92	16	1064	45000	
93	16	1064	45000	
94	16	1064	45000	
95	16	1064	45000	
96	16	1044	45000	
97	17	848	45000	
98	17	849	45000	
99	17	854	45000	
100	17	849	45000	
101	17	849	45000	
102	17	848	45000	
103	17	1048	45000	
104	17	1058	45000	
105	17	1064	45000	
106	17	1058	45000	
107	17	1058	45000	
108	17	1048	45000	
109	17	1046	45000	
110	17	1054	45000	
111	17	1054	45000	
112	17	1058	45000	
113	17	1054	45000	
114	17	1046	45000	
115	18	842	45000	
116	18	849	45000	
117	18	848	45000	
118	18	848	45000	
119	18	848	45000	
120	18	844	45000	
121	18	1038	45000	
122	18	1054	45000	
123	18	1054	45000	
124	18	1054	45000	
125	18	1054	45000	
126	18	1038	45000	
127	18	1044	45000	
128	18	1058	45000	
129	18	1058	45000	
130	18	1058	45000	

SEPTEMBER 29, 1977

G. K. L.

STRATA PLAN N.W. 1018

FORM 13

NEW DEVELOPMENT CERTIFICATE

(SECTION 4 (1))

I, GORDON HEROLD MURRAY OF VANCOUVER, BRITISH COLUMBIA LAND SURVEYOR, HEREBY CERTIFY THAT THE STRATA LOTS REPRESENTED ON THE STRATA PLAN OF LOT 72 OF SECTIONS 19 AND 20, BLOCK 3 NORTH, RANGE 1 WEST, PLAN 51713, NEW WESTMINSTER DISTRICT CONSTITUTE A NEW DEVELOPMENT AND HAVE NOT, TO THE BEST OF MY KNOWLEDGE AND BELIEF, BEEN PREVIOUSLY OCCUPIED.

G. H. Murray
SIGNATURE

DATED AT SURREY, B.C.
THIS 29th DAY OF September, 1977

171	21	848	45000	
172	21	851	45000	
173	21	849	45000	
174	21	848	45000	
175	21	1034	45000	
176	21	1054	45000	
177	21	1056	45000	
178	21	1058	45000	
179	21	1054	45000	
180	21	1044	45000	
181	21	1046	45000	
182	21	1054	45000	
183	21	1058	45000	
184	21	1056	45000	
185	21	1054	45000	
186	21	1034	45000	
AGGREGATE		183,246	8,370,000	

ACCEPTED AS TO FORMS 1, 2 AND 3.
DATED THIS 29th DAY OF February, 1977
Elsone Palkon
FOR SUPERINTENDENT OF INSURANCE

STATUTORY DECLARATION

I, ~~THE~~ THE UNDERSIGNED DO SOLEMNLY DECLARE THAT
(1) I, ~~THE~~ THE UNDERSIGNED (AM I AM) THE OWNER - DEVELOPER
~~OF THE STRATA PLAN~~ THE DULY AUTHORIZED AGENT
OF THE OWNER - DEVELOPER.
(2) THE STRATA PLAN IS ENTIRELY FOR RESIDENTIAL USE.
I ~~MAKE~~ MAKE THIS SOLEMN DECLARATION CONSCIENTIOUSLY,
BELIEVING IT TO BE TRUE, AND KNOWING THAT IT IS OF
THE SAME FORCE AND EFFECT AS IF MADE UNDER OATH.

DECLARED BEFORE ME
AT VANCOUVER
IN THE PROVINCE OF BRITISH COLUMBIA
THIS 29th DAY OF February AD
1977.

A NOTARY PUBLIC IN AND FOR THE PROVINCE OF BRITISH COLUMBIA,
A COMMISSIONER FOR TAKING AFFIDAVITS IN BRITISH COLUMBIA.

AS TO MORTGAGE
THE MARITIME LIFE
ASSURANCE COMPANY

[Signature]

OWNER - DEVELOPER
ABACUS CITIES LTD.

[Signature]

ST. CLERKSON, VICE-PRESIDENT

STRATA LOT NUMBER	SHEET NUMBER	FORM I	FORM II	FORM III
		SCHEDULE OF UNIT ENTITLEMENT	SCHEDULE OF INTEREST UPON DESTRUCTION	SCHEDULE OF VOTING RIGHTS
131	18	1058	45000	
132	18	1044	45000	
133	19	850	45000	
134	19	851	45000	
135	19	856	45000	
136	19	853	45000	
137	19	850	45000	
138	19	853	45000	
139	19	1048	45000	
140	19	1058	45000	
141	19	1058	45000	
142	19	1058	45000	
143	19	1058	45000	
144	19	1034	45000	
145	19	1054	45000	
146	19	1058	45000	
147	19	1058	45000	
148	19	1058	45000	
149	19	1058	45000	
150	19	1048	45000	
151	20	859	45000	
152	20	850	45000	
153	20	850	45000	
154	20	852	45000	
155	20	848	45000	
156	20	844	45000	
157	20	1038	45000	
158	20	1058	45000	
159	20	1064	45000	
160	20	1064	45000	
161	20	1058	45000	
162	20	1044	45000	
163	20	1058	45000	
164	20	1054	45000	
165	20	1058	45000	
166	20	1058	45000	
167	20	1034	45000	
168	20	1034	45000	
169	21	838	45000	
170	21	847	45000	

BUILDING SECTIONS

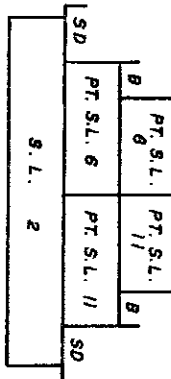
SCALE: 1 INCH = 20 FEET

STRATA PLAN N.W. 1018

SECTION A-A'
VIEWED FROM THE SOUTHEAST

PT. S.L. 9	PT. S.L. 10	PT. S.L. 11	PT. S.L. 12
PT. S.L. 9	PT. S.L. 10	PT. S.L. 11	PT. S.L. 12
PT. S.L. 4	S.L. 3	PT. S.L. 10 PT. S.L. 11	S.L. 2
PT. S.L. 9	S.L. 10	PT. S.L. 11	PT. S.L. 12

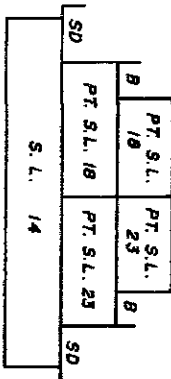
SECTION B-B'
VIEWED FROM THE SOUTHWEST



SECTION C-C'
VIEWED FROM THE SOUTHEAST

PT. S.L. 21	PT. S.L. 22	PT. S.L. 23	PT. S.L. 24
PT. S.L. 21	PT. S.L. 22	PT. S.L. 23	PT. S.L. 24
PT. S.L. 16	S.L. 15	PT. S.L. 25 PT. S.L. 26	S.L. 14
PT. S.L. 16	S.L. 15	PT. S.L. 25	S.L. 14

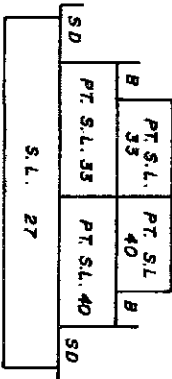
SECTION D-D'
VIEWED FROM THE SOUTHWEST



SECTION E-E'
VIEWED FROM THE SOUTHEAST

PT. S.L. 36	PT. S.L. 33	PT. S.L. 34	PT. S.L. 33	PT. S.L. 32	PT. S.L. 31
PT. S.L. 36	PT. S.L. 33	PT. S.L. 34	PT. S.L. 33	PT. S.L. 32	PT. S.L. 31
PT. S.L. 30	S.L. 29	PT. S.L. 38 PT. S.L. 34	S.L. 28	S.L. 27	PT. S.L. 35 PT. S.L. 32
PT. S.L. 30	S.L. 29	PT. S.L. 38	S.L. 28	S.L. 27	PT. S.L. 35

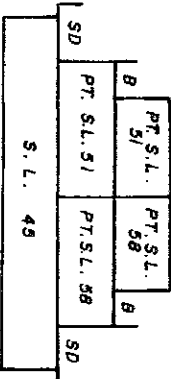
SECTION F-F'
VIEWED FROM THE SOUTHWEST



SECTION G-G'
VIEWED FROM THE SOUTHEAST

PT. S.L. 54	PT. S.L. 53	PT. S.L. 52	PT. S.L. 51	PT. S.L. 50	PT. S.L. 49
PT. S.L. 54	PT. S.L. 53	PT. S.L. 52	PT. S.L. 51	PT. S.L. 50	PT. S.L. 49
PT. S.L. 48	S.L. 47	PT. S.L. 57 PT. S.L. 52	S.L. 46	S.L. 45	PT. S.L. 51 PT. S.L. 50
PT. S.L. 48	S.L. 47	PT. S.L. 57	S.L. 46	S.L. 45	PT. S.L. 51

SECTION H-H'
VIEWED FROM THE SOUTHWEST



SEPTEMBER 29, 1977

G.M.

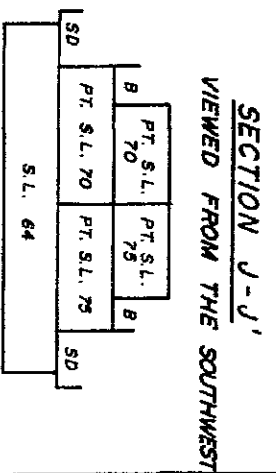
BUILDING SECTIONS

SCALE : 1 INCH = 20 FEET

STRATA PLAN N.W. 2018

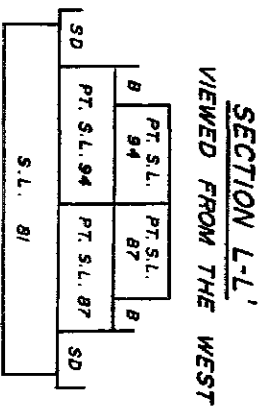
SECTION I-I'
VIEWED FROM THE SOUTHEAST

PT. S.L. 73	PT. S.L. 74	PT. S.L. 75	PT. S.L. 76	PT. S.L. 77	PT. S.L. 78
PT. S.L. 73	PT. S.L. 74	PT. S.L. 75	PT. S.L. 76	PT. S.L. 77	PT. S.L. 78
PT. S.L. 66	PT. S.L. 65	PT. S.L. 64	PT. S.L. 63	PT. S.L. 62	PT. S.L. 61
PT. S.L. 73	PT. S.L. 74	PT. S.L. 75	PT. S.L. 76	PT. S.L. 77	PT. S.L. 78



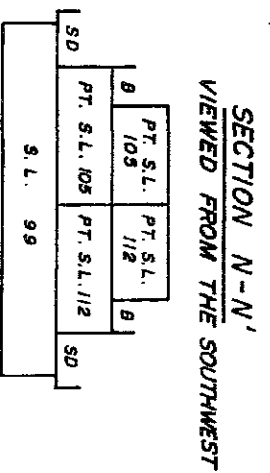
SECTION K-K'
VIEWED FROM THE SOUTHWEST

PT. S.L. 85	PT. S.L. 86	PT. S.L. 87	PT. S.L. 88	PT. S.L. 89	PT. S.L. 90
PT. S.L. 85	PT. S.L. 86	PT. S.L. 87	PT. S.L. 88	PT. S.L. 89	PT. S.L. 90
PT. S.L. 79	PT. S.L. 80	PT. S.L. 81	PT. S.L. 82	PT. S.L. 83	PT. S.L. 84
PT. S.L. 85	PT. S.L. 86	PT. S.L. 87	PT. S.L. 88	PT. S.L. 89	PT. S.L. 90



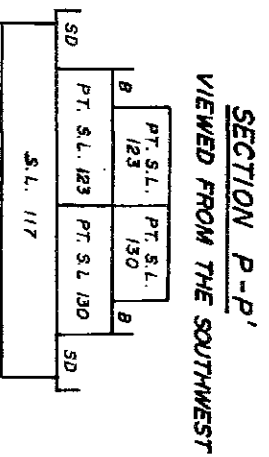
SECTION M-M'
VIEWED FROM THE SOUTHEAST

PT. S.L. 108	PT. S.L. 107	PT. S.L. 106	PT. S.L. 105	PT. S.L. 104	PT. S.L. 103
PT. S.L. 108	PT. S.L. 107	PT. S.L. 106	PT. S.L. 105	PT. S.L. 104	PT. S.L. 103
PT. S.L. 102	PT. S.L. 101	PT. S.L. 100	PT. S.L. 99	PT. S.L. 98	PT. S.L. 97
PT. S.L. 108	PT. S.L. 107	PT. S.L. 106	PT. S.L. 105	PT. S.L. 104	PT. S.L. 103



SECTION O-O'
VIEWED FROM THE SOUTHEAST

PT. S.L. 126	PT. S.L. 125	PT. S.L. 124	PT. S.L. 123	PT. S.L. 122	PT. S.L. 121
PT. S.L. 126	PT. S.L. 125	PT. S.L. 124	PT. S.L. 123	PT. S.L. 122	PT. S.L. 121
PT. S.L. 120	PT. S.L. 119	PT. S.L. 118	PT. S.L. 117	PT. S.L. 116	PT. S.L. 115
PT. S.L. 126	PT. S.L. 125	PT. S.L. 124	PT. S.L. 123	PT. S.L. 122	PT. S.L. 121



BUILDING VIII

BUILDING VII

BUILDING VI

BUILDING V

STRATA PLAN N.W. 2018

BUILDING SECTIONS

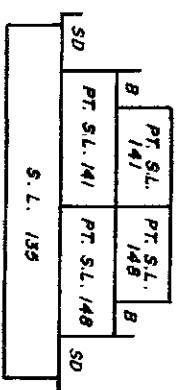
SCALE : 1 INCH = 20 FEET

SECTION Q-Q'

VIEWED FROM THE SOUTHEAST

PT. S.L. 144	PT. S.L. 143	PT. S.L. 142	PT. S.L. 141	PT. S.L. 140	PT. S.L. 139
PT. S.L. 144	PT. S.L. 143	PT. S.L. 142	PT. S.L. 141	PT. S.L. 140	PT. S.L. 139
PT. S.L. 138	S.L. 137	PT. S.L. 136	S.L. 135	PT. S.L. 134	S.L. 133
PT. S.L. 144	PT. S.L. 143	PT. S.L. 142	PT. S.L. 141	PT. S.L. 140	PT. S.L. 139

SECTION R-R'
VIEWED FROM THE SOUTHWEST

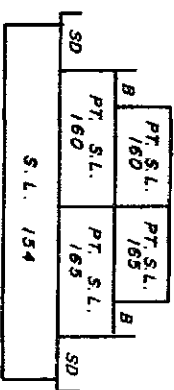


SECTION S-S'

VIEWED FROM THE SOUTHEAST

PT. S.L. 163	PT. S.L. 164	PT. S.L. 165	PT. S.L. 166	PT. S.L. 167	PT. S.L. 168
PT. S.L. 163	PT. S.L. 164	PT. S.L. 165	PT. S.L. 166	PT. S.L. 167	PT. S.L. 168
PT. S.L. 156	S.L. 155	PT. S.L. 154	S.L. 153	PT. S.L. 152	S.L. 151
PT. S.L. 163	PT. S.L. 164	PT. S.L. 165	PT. S.L. 166	PT. S.L. 167	PT. S.L. 168

SECTION T-T'
VIEWED FROM THE SOUTHWEST

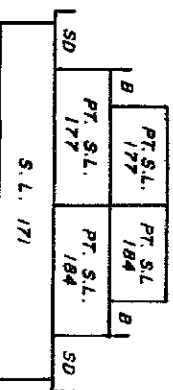


SECTION V-V'

VIEWED FROM THE SOUTHEAST

PT. S.L. 180	PT. S.L. 179	PT. S.L. 178	PT. S.L. 177	PT. S.L. 176	PT. S.L. 175
PT. S.L. 180	PT. S.L. 179	PT. S.L. 178	PT. S.L. 177	PT. S.L. 176	PT. S.L. 175
PT. S.L. 174	S.L. 173	PT. S.L. 172	S.L. 171	S.L. 170	S.L. 169
PT. S.L. 180	PT. S.L. 179	PT. S.L. 178	PT. S.L. 177	PT. S.L. 176	PT. S.L. 175

SECTION W-W'
VIEWED FROM THE SOUTHWEST



BUILDING XI

BUILDING X

BUILDING IX

G.H.W

SEPTEMBER 29, 1977

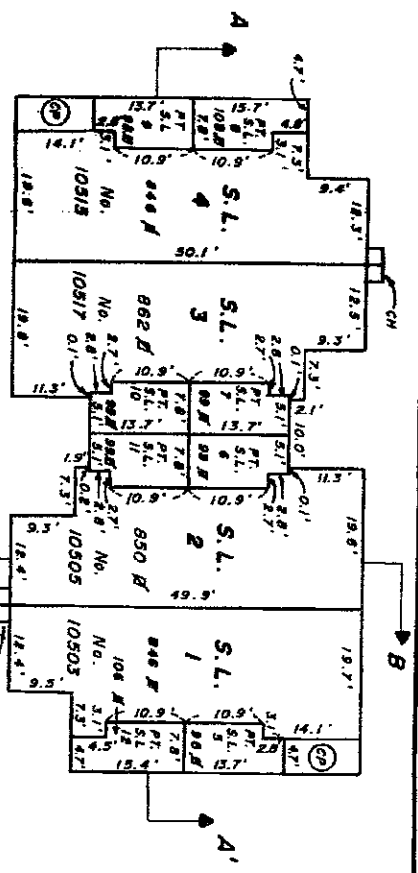
FILE 6013

BUILDING I

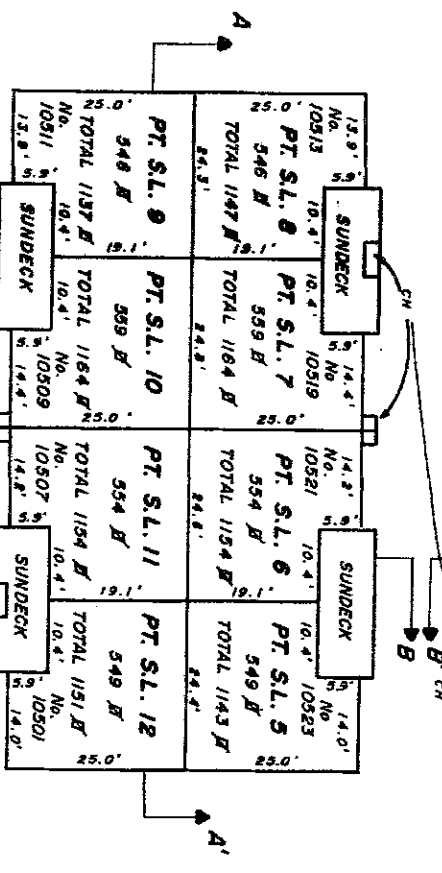
SCALE : 1 INCH = 20 FEET

NOTE :
 DOTTED LINES INDICATE OUTLINE
 OF FLOOR BELOW.

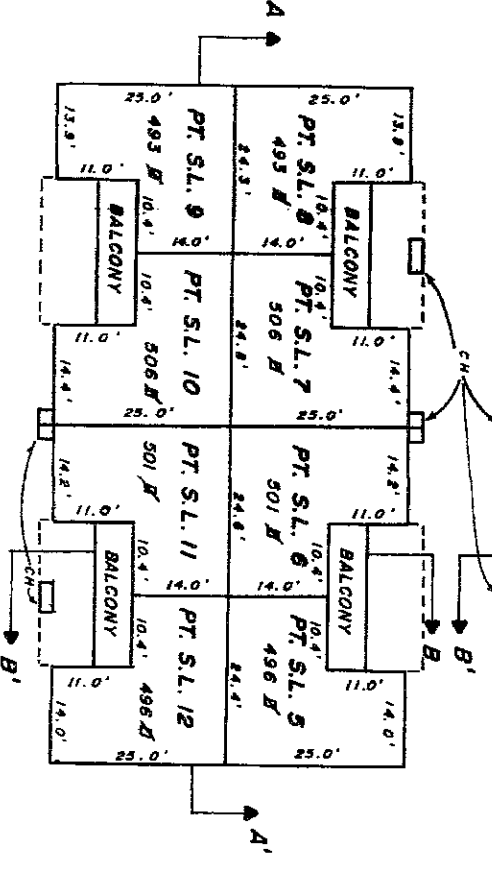
CIVIC ADDRESSES ARE ON HOLLY PARK LANE



STRATA PLAN N.W. 1218
 FIRST FLOOR



SECOND FLOOR

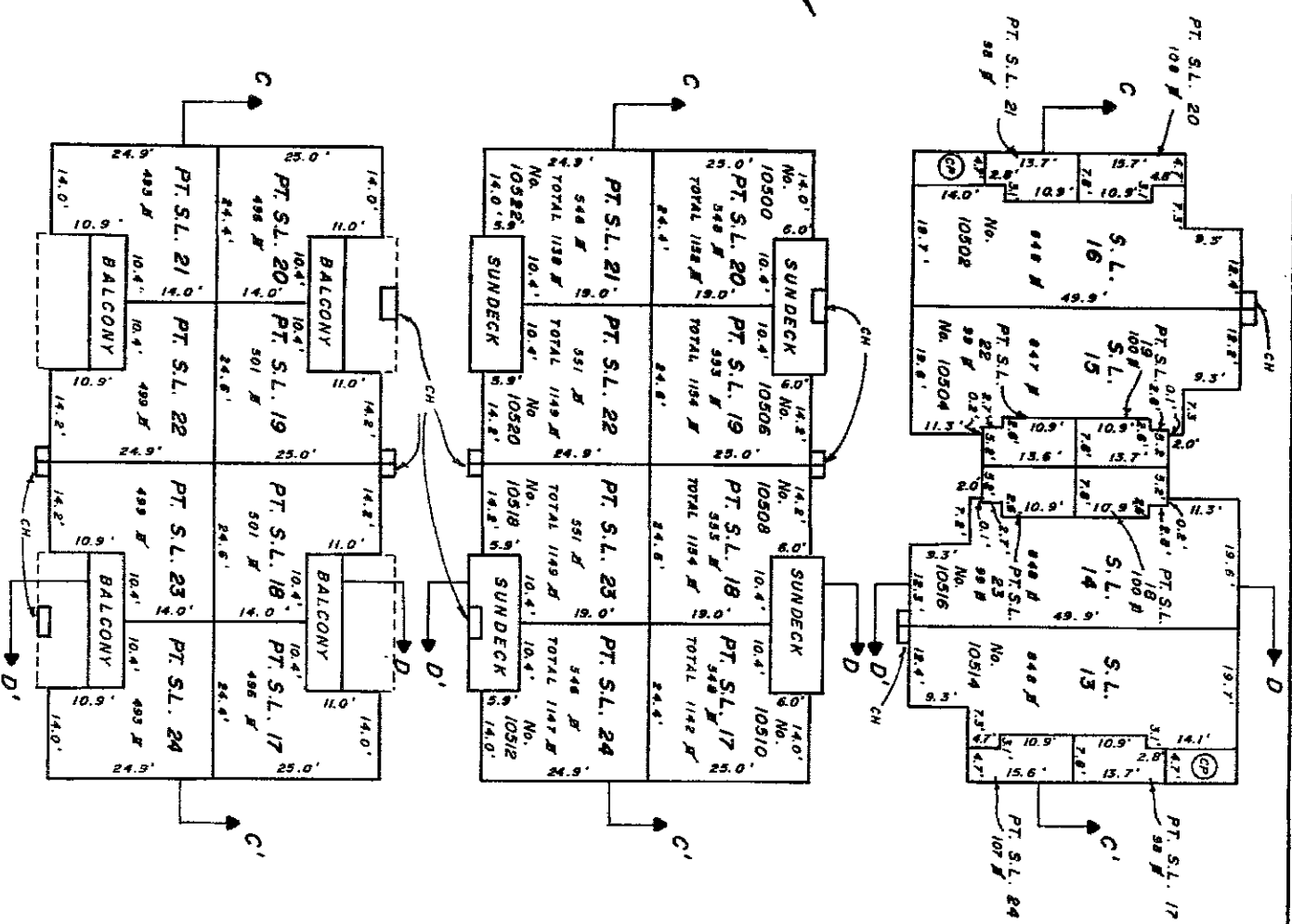


THIRD FLOOR

BUILDING II

SCALE: 1 INCH = 20 FEET.

NOTE:
 DOTTED LINES INDICATE OUTLINE OF
 FLOOR BELOW.
 CIVIC ADDRESSES ARE ON HOLLY PARK LANE.



STRATA PLAN N.W. 1012

FIRST FLOOR

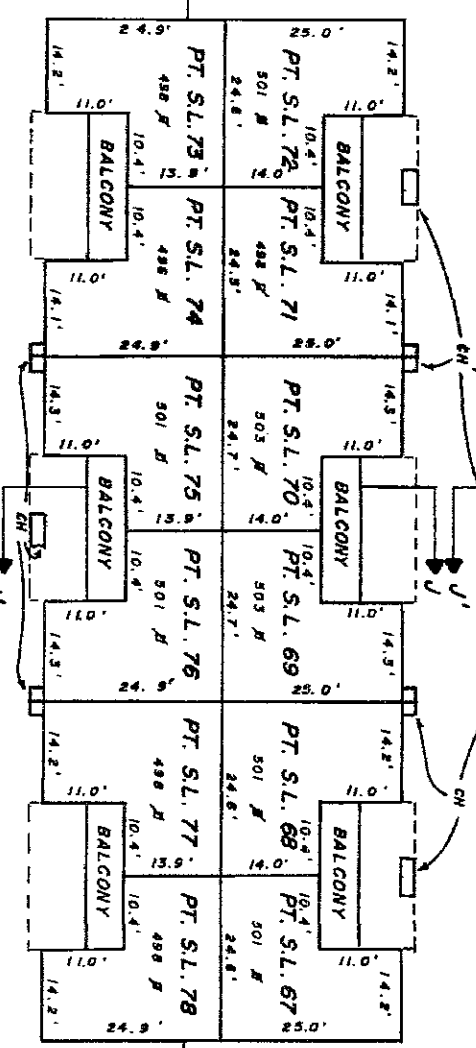
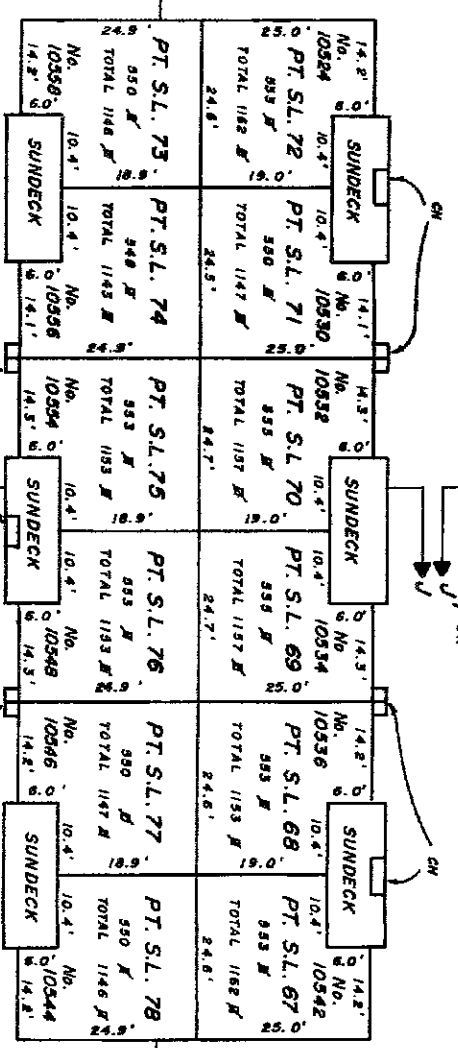
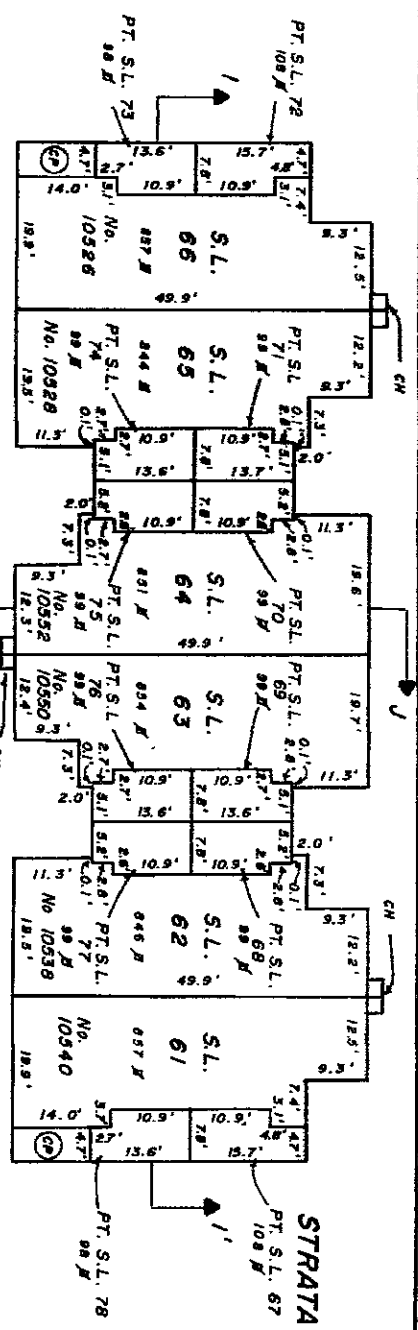
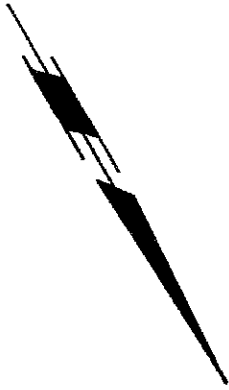
SECOND FLOOR

THIRD FLOOR

BUILDING IX

SCALE - 1 INCH = 20 FEET

NOTE:
DOTTED LINES INDICATE OUTLINE
OF FLOOR BELOW
CIVIC ADDRESSES ARE ON HOLLY PARK LANE



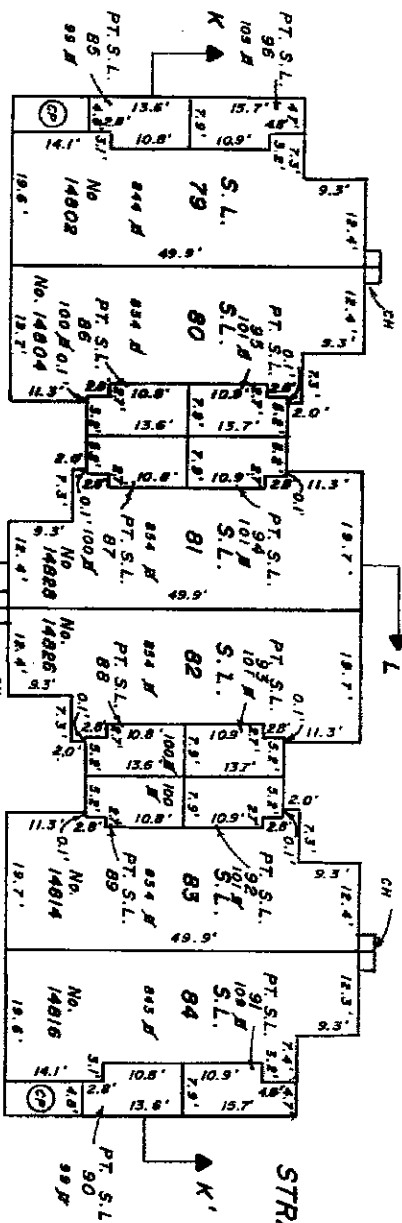
STRATA PLAN N.W. 1018

SEPTEMBER 23, 1977
G.H.M.
FILE 6015

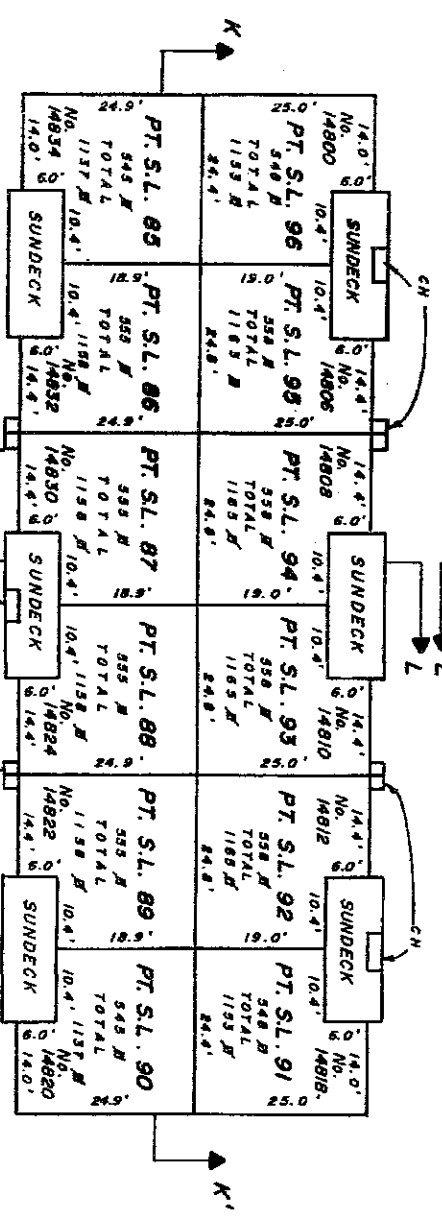
BUILDING VI

SCALE: 1 INCH = 20 FEET

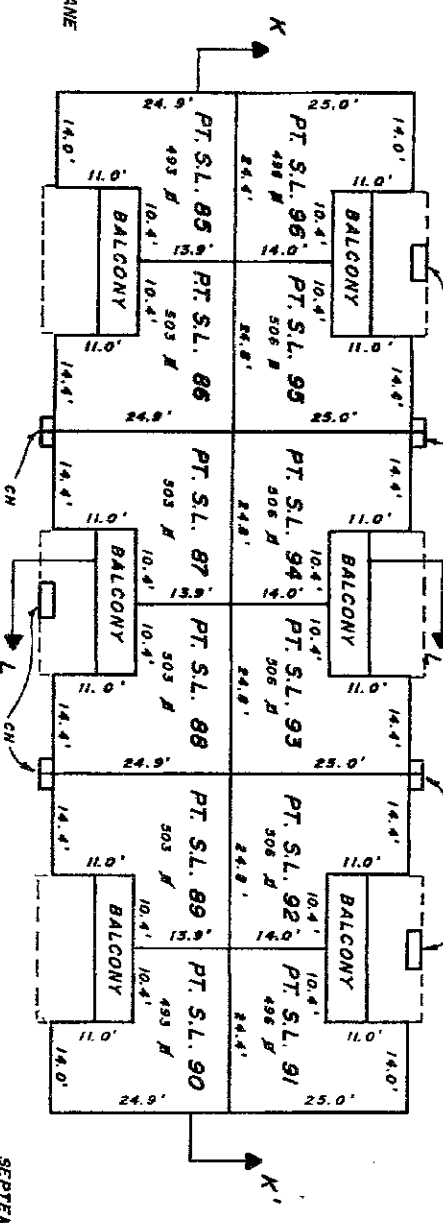
STRATA PLAN N.W. 1218



FIRST FLOOR



SECOND FLOOR



THIRD FLOOR

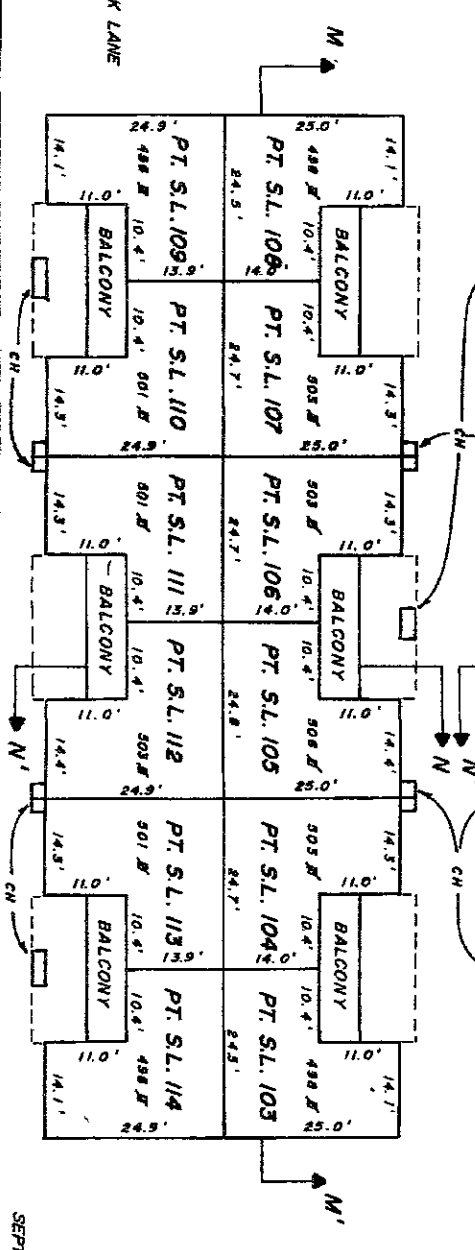
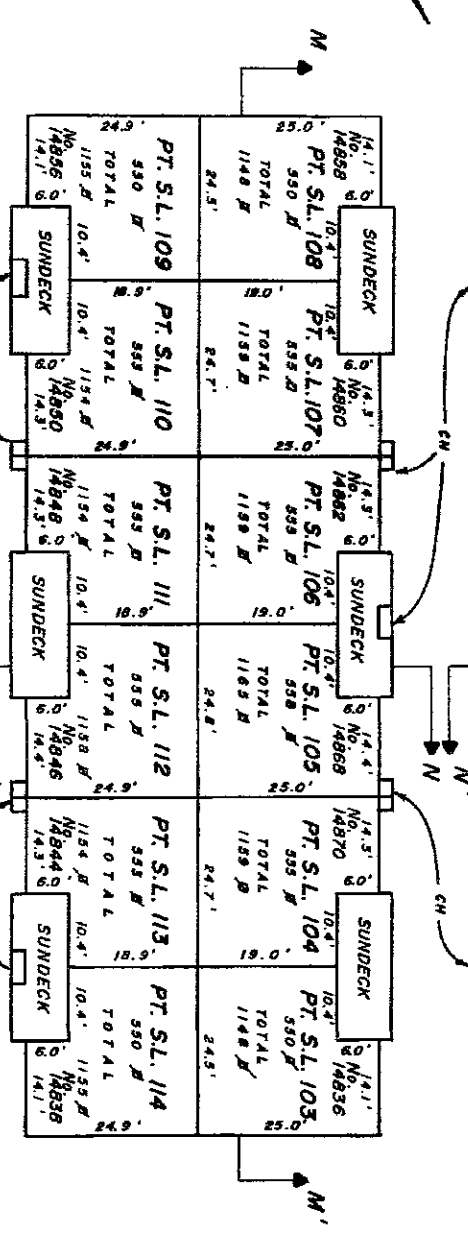
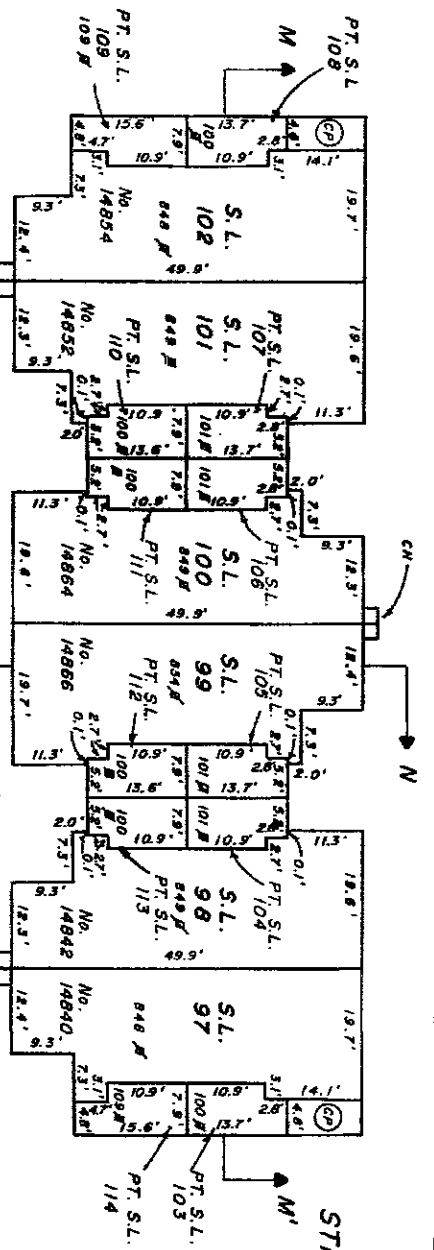
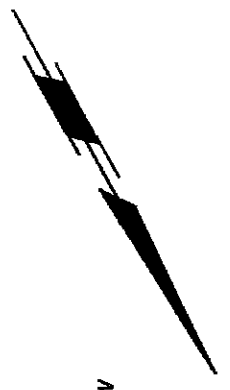
NOTE:
DOTTED LINES INDICATE OUTLINE
OF FLOOR BELOW.

CIVIC ADDRESSES ARE ON HOLLY PARK LANE



BUILDING VII

SCALE: 1 INCH = 20 FEET



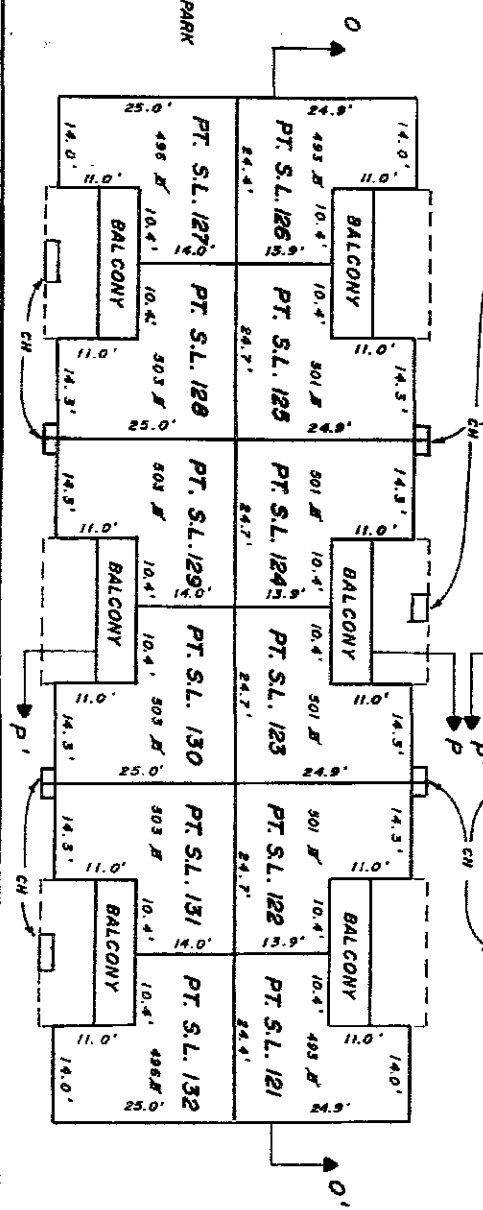
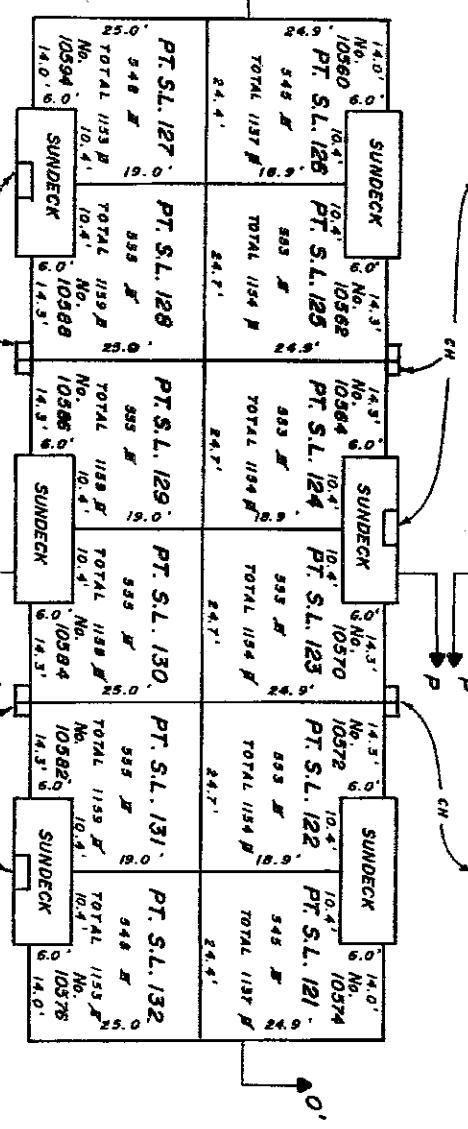
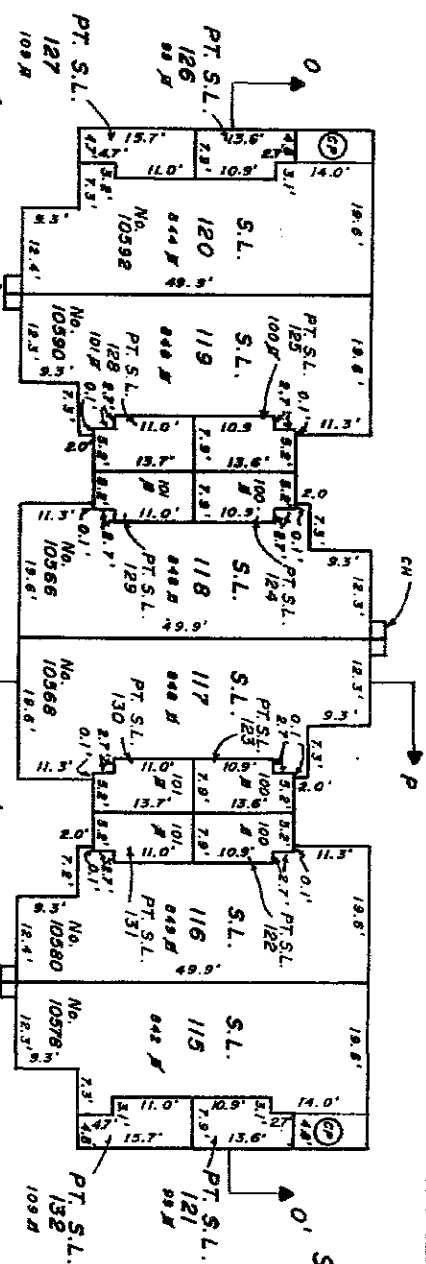
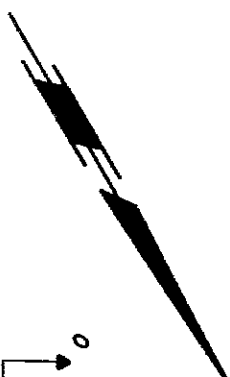
NOTE:
 DOTTED LINES INDICATE OUTLINE
 OF FLOOR BELOW.
 CIVIC ADDRESSES ARE ON HOLLY PARK LANE

STRATA PLAN N.W. 1018

SEPTEMBER 29, 1977
 G.H.K.
 FILE 6019

BUILDING VIII

SCALE: 1 INCH = 20 FEET



NOTE:
 DOTTED LINES INDICATE OUTLINE
 OF FLOOR BELOW.
 CIVIC ADDRESSES ARE ON HOLLY PARK
 LANE.

STRATA PLAN N.W. 1218

THIRD FLOOR

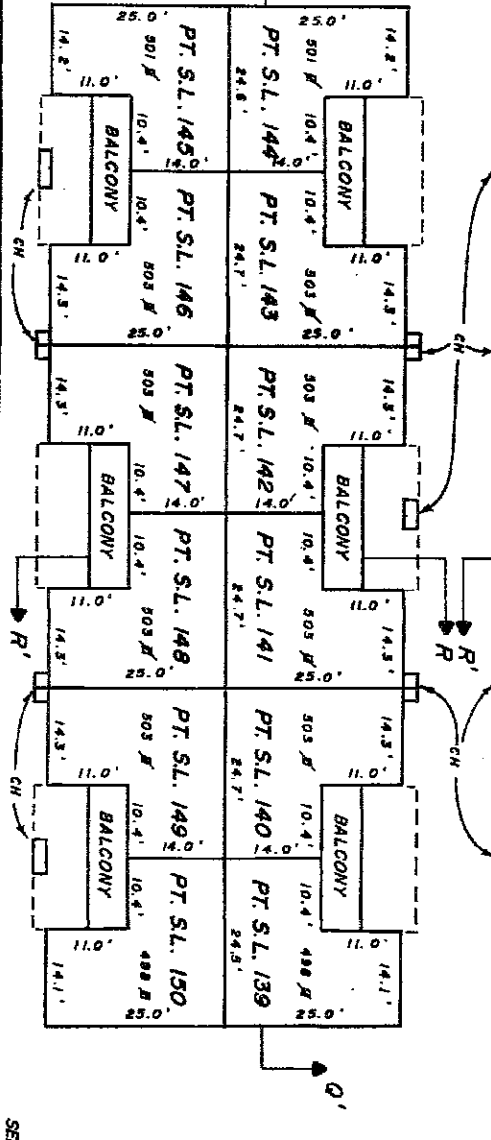
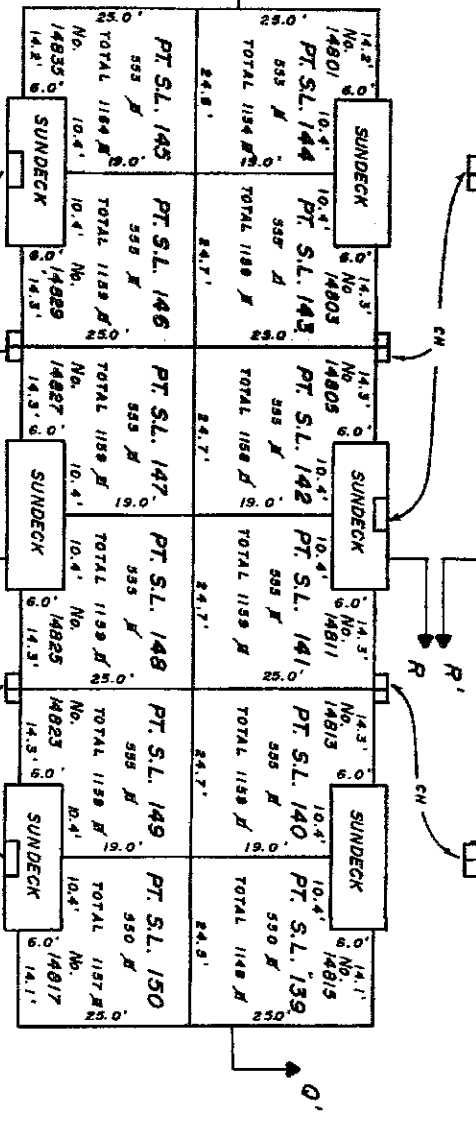
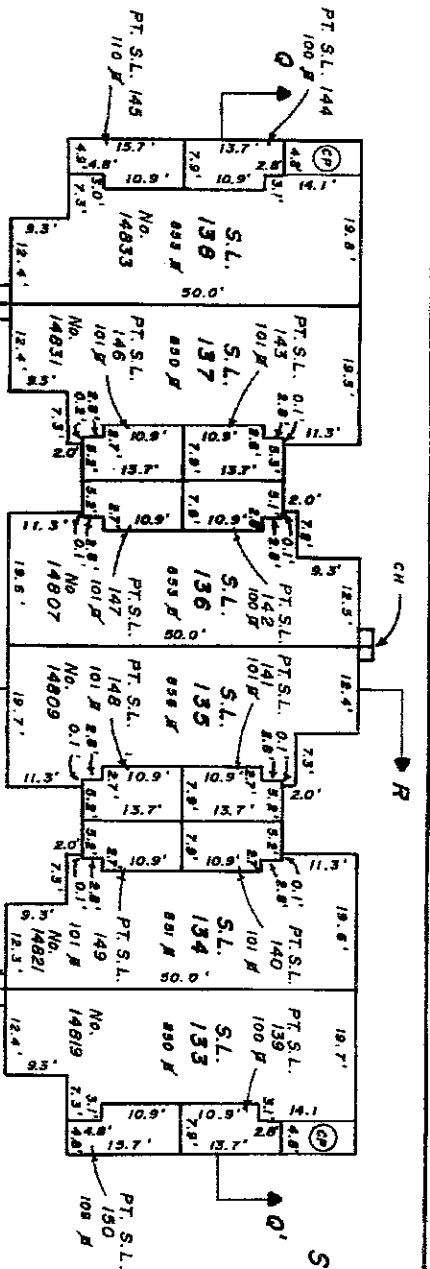
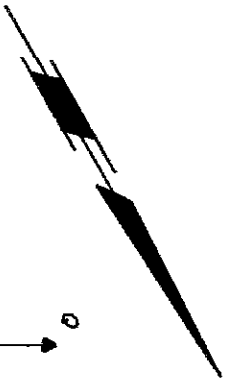
SECOND FLOOR

FIRST FLOOR

STRATA PLAN N.W. 1018

BUILDING IX

SCALE: 1 INCH = 20 FEET



NOTE:
 DOTTED LINES INDICATE
 OUTLINE OF FLOOR BELOW
 CIVIC ADDRESSES ARE ON HOLLY PARK
 LANE.

BUILDING X

SCALE: 1 INCH = 20 FEET

STRATA PLAN N.W. 1018



NOTE:
DOTTED LINES INDICATE
OUTLINE OF FLOOR BELOW.
CIVIC ADDRESSES ARE ON HOLLY PARK
LANE.

